

FRIDAY 4:30

JUNE BUGS

- **Costumes will be required to be worn to class on Friday, April 24 for a details check.**
- **Since this is a details check so be sure to have everything done as explained below before coming to class that day.**
 - **Don't forget to wear your tan tights (NO PANTY HOSE) , and black tap shoes fastened with elastic instead of ribbons. Also needed are a pair of black tall crew socks. (If you have a problem locating these try the boys department.)**
 - **Don't forget to wear your chosen undergarment (if any) which should be skin tone in color, and totally hidden from view.**

PICTURE DAY: Saturday May 9. DRESS REHEARSAL and RECITAL: Saturday, May 23.

Important: Immediately try on your costume, and immediately double check to see if all pieces as listed below are included in your packet. Your costume package includes:

- Leotard
- Tap skirt
- Mitts
- Copper stretch sequins
- Black stretch sequins
- Pony tail holder- - set aside as we will not use
- Pop clips

STRAPS

- Using the black stretch sequins, cover the opening on the bodice front by placing the sequins underneath and securely sewing in place. (See picture next page.)

SKIRT

- To make a one piece unit, sew the tap skirt in several places all around to the leotard with the top edge of the waistband just below the below button. (See picture next page.) Knot off the thread at place so it won't pop when taking the costume on and off.
- Most of you will leave the length of the skirt as is. If you name is listed below please shorten your skirt as indicated.
Shorten your skirt by 1": Briana, Elah, Naama

MITTS

Wear the mitts with the shiny side out and the longer side extended towards the wrist..
Check out the mitts with vigorous movement. If the tend to start slipping off tighten as needed.

HEADDRESS

Using the copper stretch sequins, form a loop that will fit around the bun like a scrunchie.
Securely sew the two pop clips to the headdress. For ultimate security, sew them on so that they will lie perpendicular to the direction the hair is being pulled into the bun.
(See picture next page.)

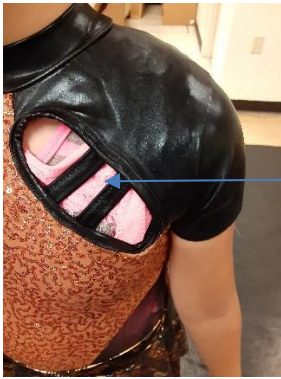
TAP SHOES

Buy black tap shoes- -no Velcro closures.
If you have ribbons, replace the ribbon with a loop of black elastic. Be sure the elastic is tight enough that the shoe cannot be kicked off, but loose enough to take the shoe on and off.
If you have shoelace ties, be sure to double-knot your bow.

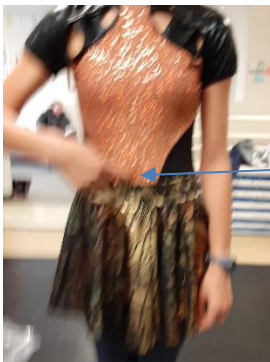
STUDENTS WITH COSTUME CHANGES:

Smaller items such as headdresses and wristlets are easily lost backstage in our crowded conditions.

- A box with compartments that can fit on a chair is a good way to keep track of such items.
- **Required: Label each item with your name**, including headdresses, to help insure no mix-ups.
- Also, it is a good idea to practice costume changes including putting every item back in it's designated place.



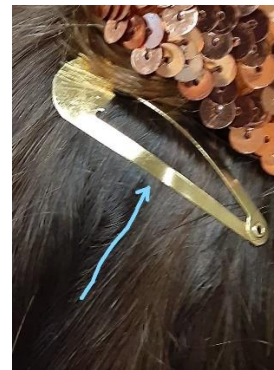
To cover the opening in the center, use the black stretch sequins and securely sew in place on the underside.



The top of the waistband just be just below the belly button.



Using the copper stretch sequins, securely sew ends together to form a loop that will fit your bun. Securely sew two pop clips to the scrunchie noting the direction that hair will be pulled into the bun. For most security it is best to sew the clips so that they will be perpendicular to the direction of the hair.



Continue to next page for your check list. You can use the check list to see if all items above have been completed.

STUDENT CHECK-OFF LIST

Friday 4:30

JUNE BUGS

- **Your details check is Friday, April 24.**
- **Please come to class in costume with all details already completed as explained on your costume instruction sheet.**
- **You can use the following to double-check if all items are completed.**

<input type="checkbox"/>
<input type="checkbox"/>
<input type="checkbox"/>
<input type="checkbox"/>
<input type="checkbox"/>
<input type="checkbox"/>
<input type="checkbox"/>
<input type="checkbox"/>
<input type="checkbox"/>

Black tap shoes with black elastic replacing ribbons

Tan tights **and** tall black crew socks

Undergarment (if any) hidden totally from view

Black sequins securely sewn and properly placed

Tap skirt securely sewn in several places

Tap skirt at proper length

Mitts stay put during vigorous movement

Headdress properly constructed with pop clips sewn on

Names in every article (including headdress and mitts)